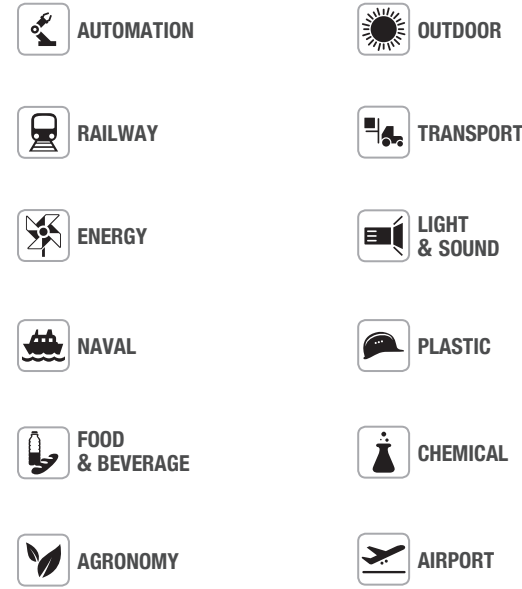


COMMITMENT TO INDUSTRY

Technological innovation is the main pillar of ILME competitiveness. In the electrical connection sector of industrial automation, characterized by the need for top performance and reliability, ILME is an acknowledged leader with its own patents and a global benchmark supplier of major companies worldwide. ILME offers a fully integrated range of high-quality products and services for every type of connection to suit any application requirements.



THE TRADITION OF INNOVATION SINCE 1938

ILME designs and manufactures complete solutions for industrial connections. Headquartered in Milan and with subsidiaries in the key countries driving the progress of automation, ILME is an industry leader in the main world markets.

People are vital to success and growth at ILME, sharing a passion for innovation, utmost responsibility and participation.

The Company is committed to developing technology in the areas that most impact the future of the industries it serves: high quality and safe cabling, research on the most suitable materials, rapid turnaround and readily available services while striving for energy saving and environmental safeguard.



CONNECTORS OVERVIEW

A complete range of innovative solutions for any industrial application



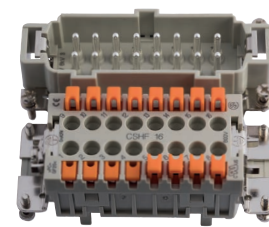
connector



ILME S.p.A.
Via Marco Antonio Colonna, 9
20149 Milano - Italy
www.ilme.com



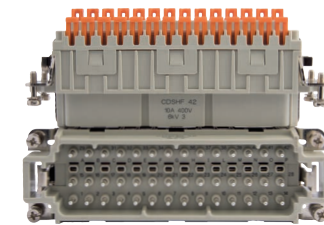
Choose your



SQUICH® series

THE CONNECTOR FOR EVERYONE

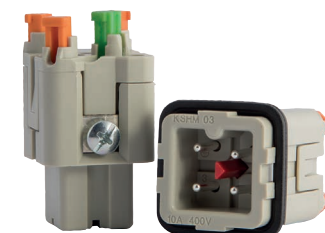
Quick, easy and safe connections without tools, saving up to 50% of wiring time, vibration proof.



CDSH inserts

HIGH DENSITY WITHOUT TOOLS

SQUICH® connection, 10A contacts, up to 70% more contacts compared to standard series.



CKSH inserts

EASY WIRING IN A COMPACT SPACE

All the advantages of ILME SQUICH® connection in size 21.21. Vertical and straight termination.



C-TYPE series

THE CLASSIC CHOICE

Enclosures designed for reliable and durable connections: stainless steel levers, profiled gaskets, wide range of uses.



V-TYPE series

EXTRA TOUGH

Enclosures with vertical closing lever in stainless steel to assure a stable and IP67 watertight seal.



T-TYPE series

THE HIGH-END PLASTIC SOLUTION

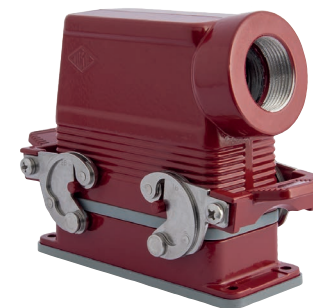
Insulated thermoplastic enclosures: mechanically robust, light weight, antistatic and corrosion resistant.



IP68 series

THE DIVING MASTER

Corrosion proof aluminium enclosures, combining IP68 degree of protection, EMC shield and high mechanical robustness.



180 °C series

THE HEAT SHIELD

Heat resistant gaskets and coating. Stainless steel levers with aluminium handles, to be used with PPS inserts to withstand temperatures up to 180 °C.



E-Xtreme® series

PROTECTION AND BEYOND

ILME patented titanium plasma protection. Corrosion proof enclosures, resistant up to 3.000 hours in salt spray tests.



HYGIENIC series

SAFE FOR FOOD

Thick and solid thermoplastic enclosures with special gaskets and levers resistant to most used chemicals and cleaning solutions used in the food industry. ECOLAB® approved.



LS-TYPE series

ON STAGE

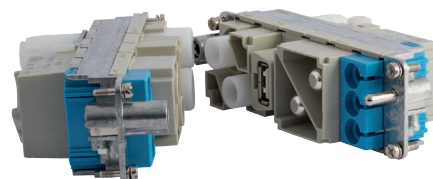
Completely black in color, the LS-TYPE is the ideal solution for the entertainment industry, designed to house all types of connector inserts.



HNM series

IN AND OUT

Enclosures and inserts with special antifriction treatment, tested up to 10.000 mating cycles.



MIXO series

BUILD YOUR CONNECTOR

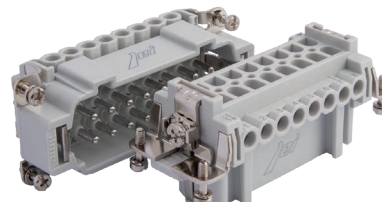
Modular and flexible system allowing the design of custom connectors. An easy-to-handle, fast mounting and space saving solution.



CQ 12 inserts

COMPACTNESS MEETS PERFORMANCE

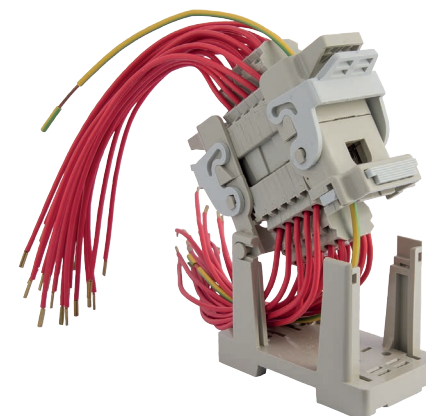
Compact solution for high density needs. Reliable, 16 coding possibilities, perfect for small motors with bridges for star/delta configuration.



JEI® series

THE STANDARD ALTERNATIVE

Extensive choice of inserts for standard applications: reliable, cost-effective solutions to meet conventional needs.



COB series

FUNCTIONALITY COUNTS

For multipole connectors inside cabinets allowing fast mounting and easy wiring control thanks to the tilting mechanism.



IL-BRID series

SOFT CLOSING, STRONG HOLD

The perfect combination of stainless steel and thermoplastic material working together. Also available with self-closing covers.



CZ7 series

RIGID COUPLING

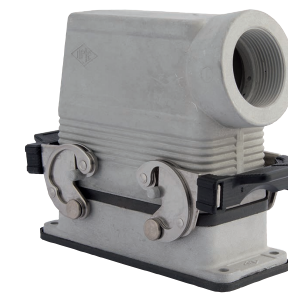
Enclosures with rigid stainless steel lever to assure an IP67 watertight seal.



BIG series

THE SPACE YOU HAVE ALWAYS NEEDED

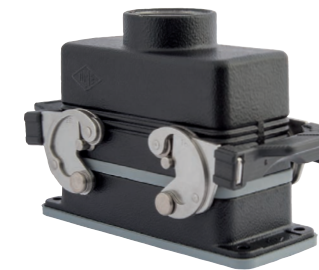
Plenty of space to allow easy wiring and even the installation of P.C. boards inside the hood. The ideal solution for XXL needs.



EMC series

NO INTERFERENCES

Enclosures with a conductive coating and special conductive EMC gaskets assuring highly effective shield.



W-TYPE series

A CORNERSTONE AGAINST CORROSION

Anticorrosive coating for aggressive environments. Equipped with special gaskets, pegs and stainless steel levers to achieve maximum performance.



CENTRAL LEVER series

EASY ACCESS FOR ROBOTICS

Enclosures designed for industrial applications with limited installation space. Easily handling granted by the locking device with a single stainless steel lever.



CK-CKA-MKA series

THE MOST COMPACT

Thermoplastic and metallic enclosures in small size for standard or aggressive environments.



JEI® series

THE STANDARD ALTERNATIVE

Multiple choice of enclosures for standard applications: reliable, robust, cost-effective solutions to meet conventional needs.